

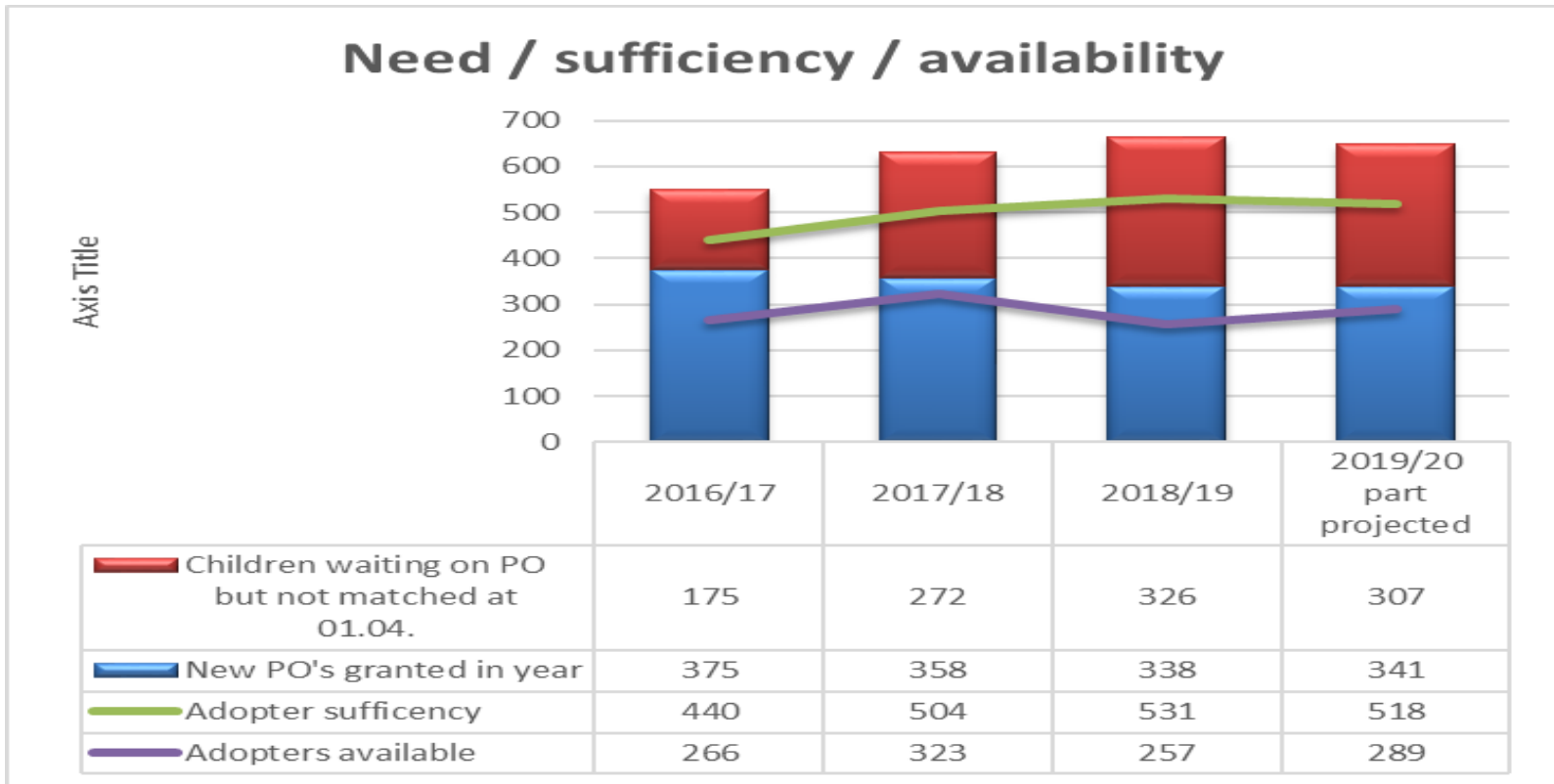


Gwasanaeth
Mabwysiadu
Cenedlaethol

National
Adoption
Service

Achieving More Together
/ Cyflawni Mwy Gyda'n Gilydd

Placement demand/ sufficiency / adopter recruitment



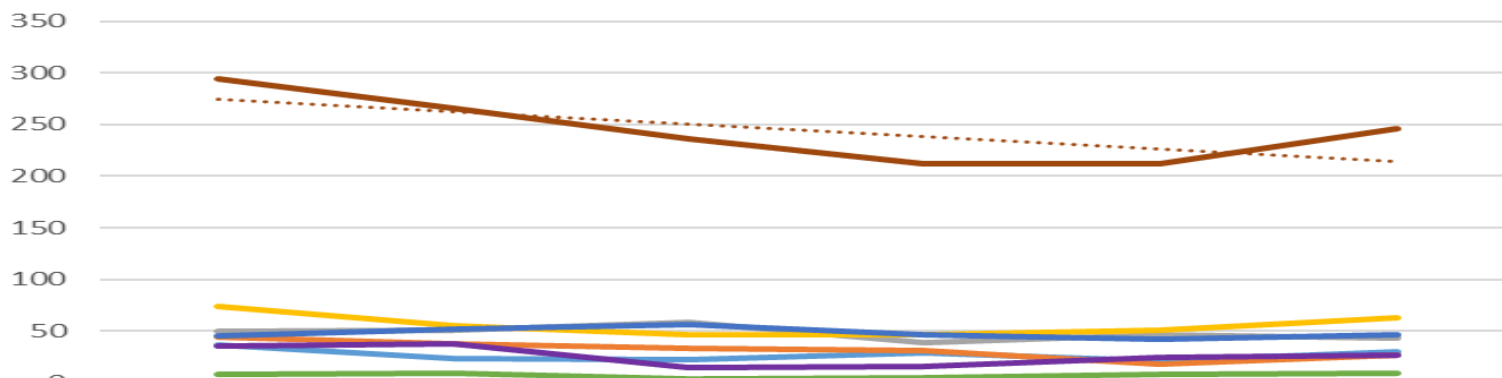
Current definition of adopter sufficiency = Placement demand minus 20% (sibling factor)

Achieving more together / Cyflawni mwy gyda'n gilydd

Adopters Approved



Number of Adopters Approved



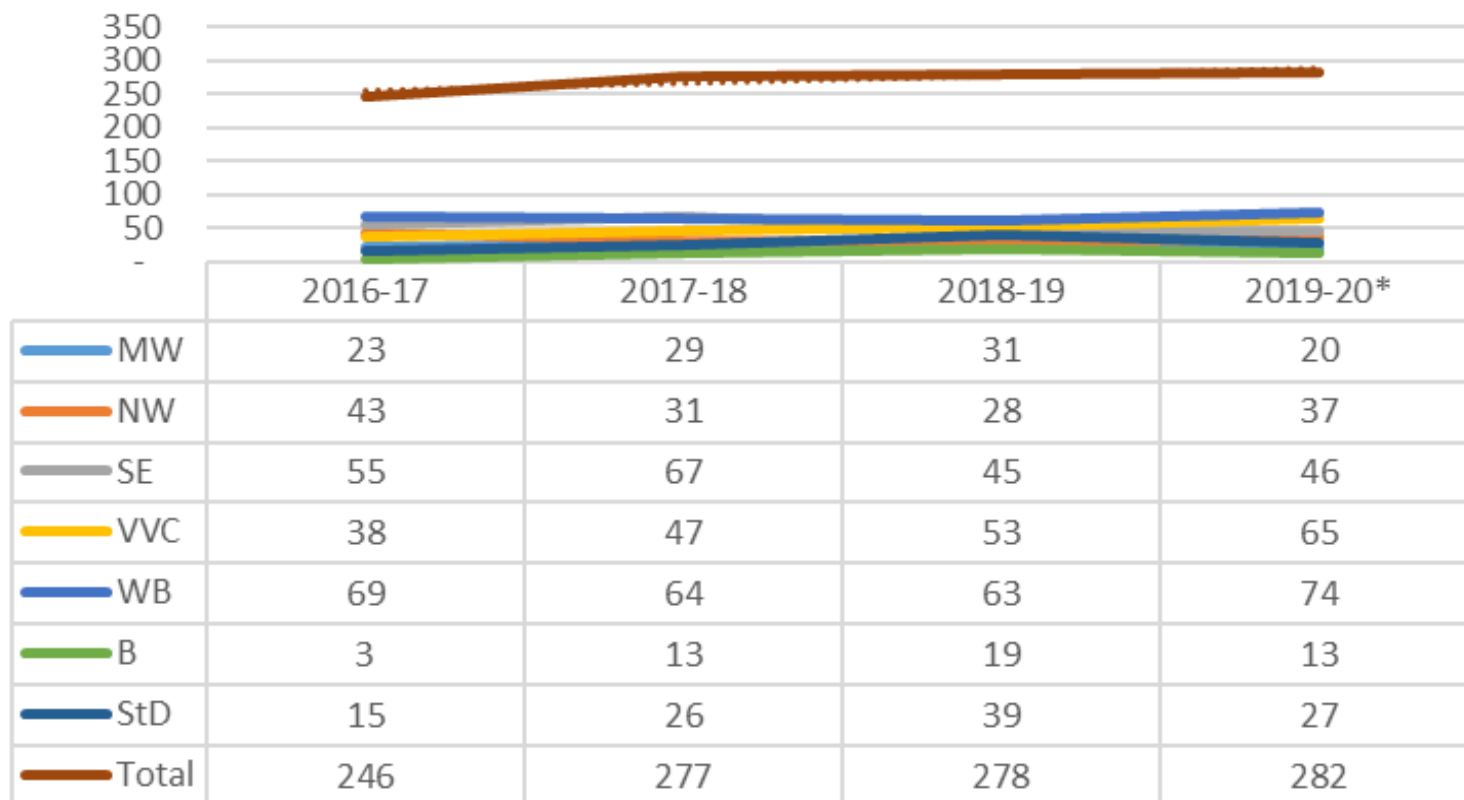
	14-15	15-16	16-17	17-18	18-19	19-20 Proj*
MW	37	23	22	29	21	30
NW	44	38	33	31	18	27
SE	50	51	59	39	47	43
VVC	74	55	47	46	51	63
WB	45	52	56	46	42	47
B	8	9	4	5	8	9
St D	36	38	15	16	25	27
Total	294	266	236	212	212	246

2014/15 to 2019/20

*2019/20 full year projection calculated using average of data since 2014/15

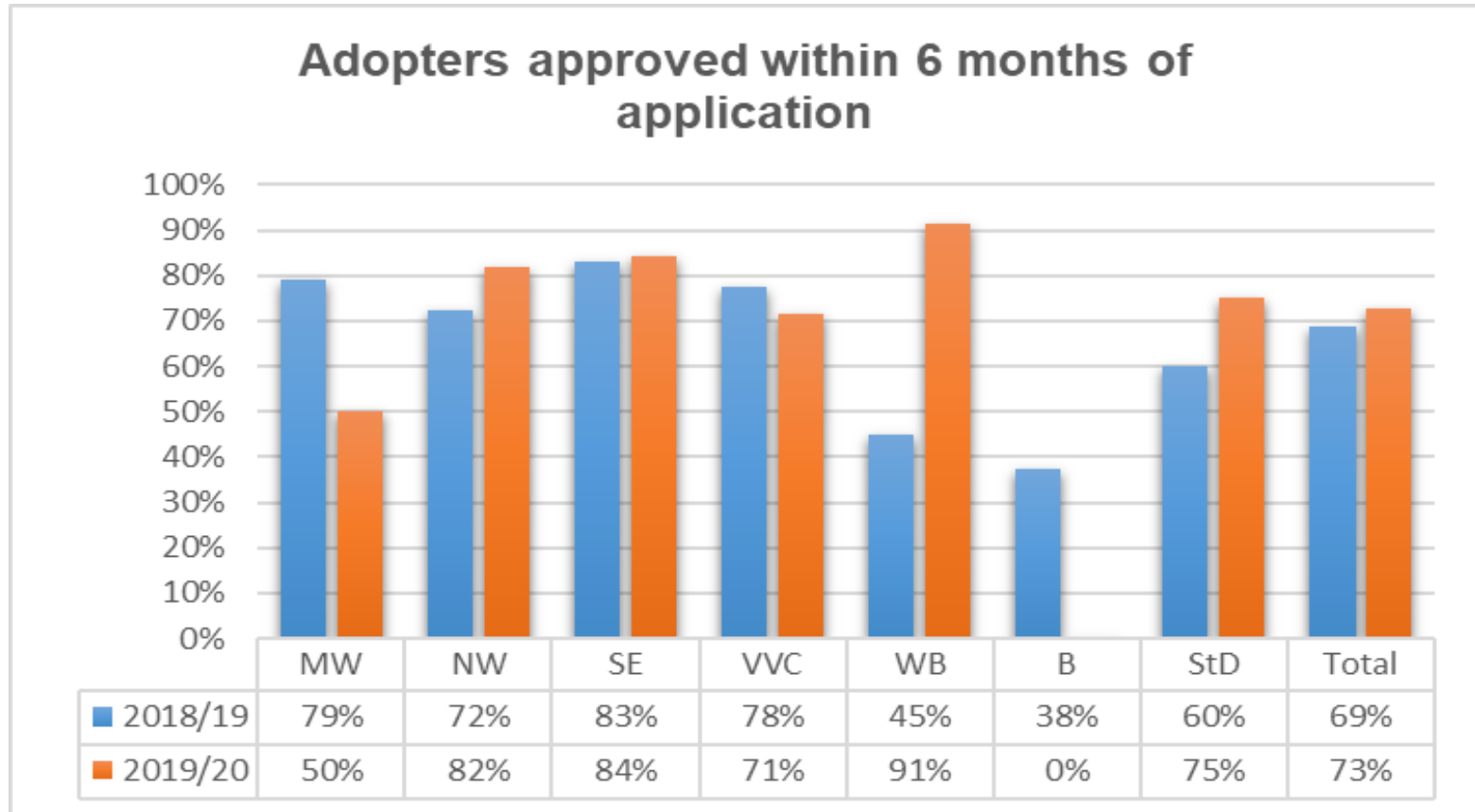
Adopter Assessments Starting

Number of Aseessments started during quarter



*2019/20 full year projection calculated using average of data since 2016/17

Adopters Approved in 6 months



Achieving more together / Cyflawni mwy gyda'n gilydd

Recruitment Summary



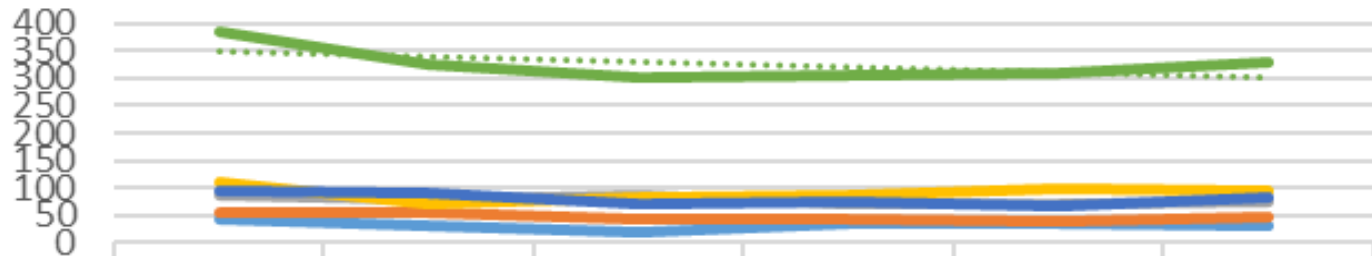
Region / Agency	Approval trend (over 5 years)	Enquiry trend (over 5 years)	New assessment trend (over 3 years)
Mid and West Wales			
North Wales			
South East Wales			
Vale, Valleys and Cardiff			
Western Bay			
Barnardos			
St Davids			
Overall			

Achieving more together / Cyflawni mwy gyda'n gilydd

Placed for Adoption



Children Placed for Adoption

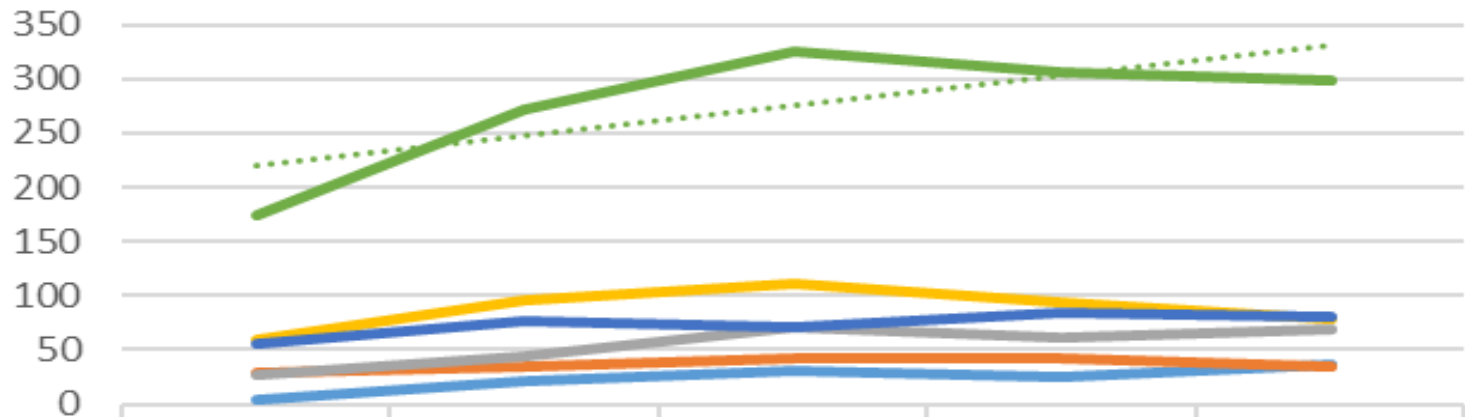


	2014-15	2015-16	2016-17	2017-18	2018-19	2019-20 Proj*
MW	41	30	19	35	35	31
NW	55	56	44	41	39	46
SE	85	80	85	71	70	75
VVC	112	70	81	86	100	96
WB	93	90	71	74	67	81
Total	386	326	300	307	311	329

*2019/20 full year projection calculated using average of data since 2014/15

Children Waiting

Children waiting with a Placement Order who have not been matched

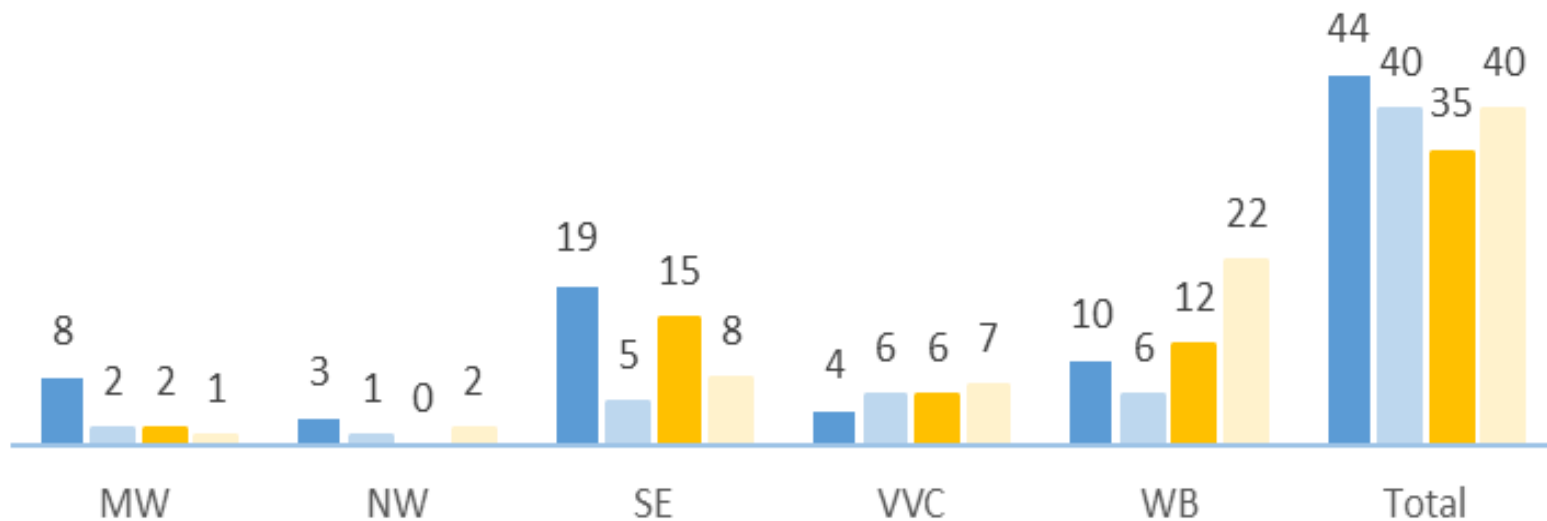


	Q4 2015-16	Q4 2016-17	Q4 2017-18	Q4 2018-19	Q2 2019-20
MW	4	21	30	25	36
NW	28	35	43	42	35
SE	27	44	71	62	68
VVC	60	95	111	94	79
WB	56	77	71	84	80
Total	175	272	326	307	298

Changes of Plan

Changes of plan 2018-19 & 2019-20(yr to date)

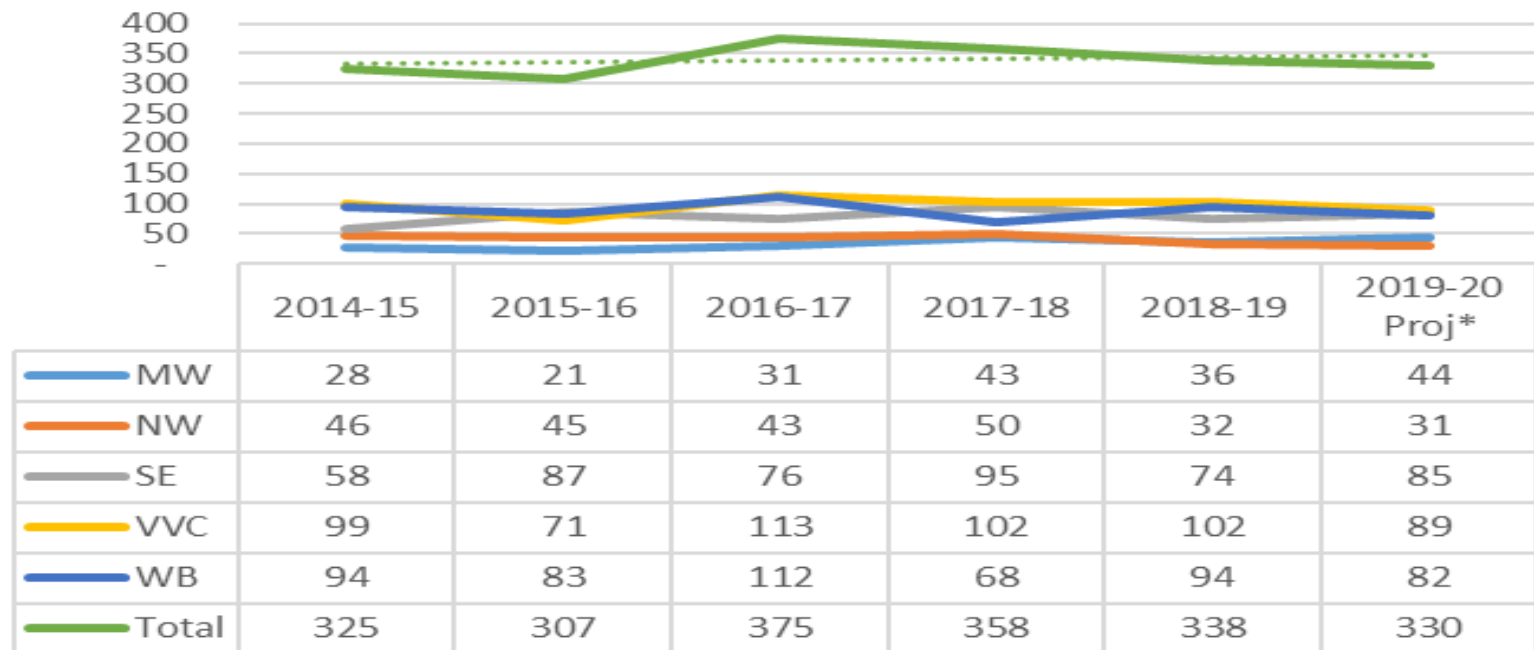
- Change of plan recommended at LAC review 2018-19
- Change of plan recommended at LAC review 2019-20 year to date
- PO's discharged 2018-19
- PO's discharged 2019-20 year to date



Placement Orders Made



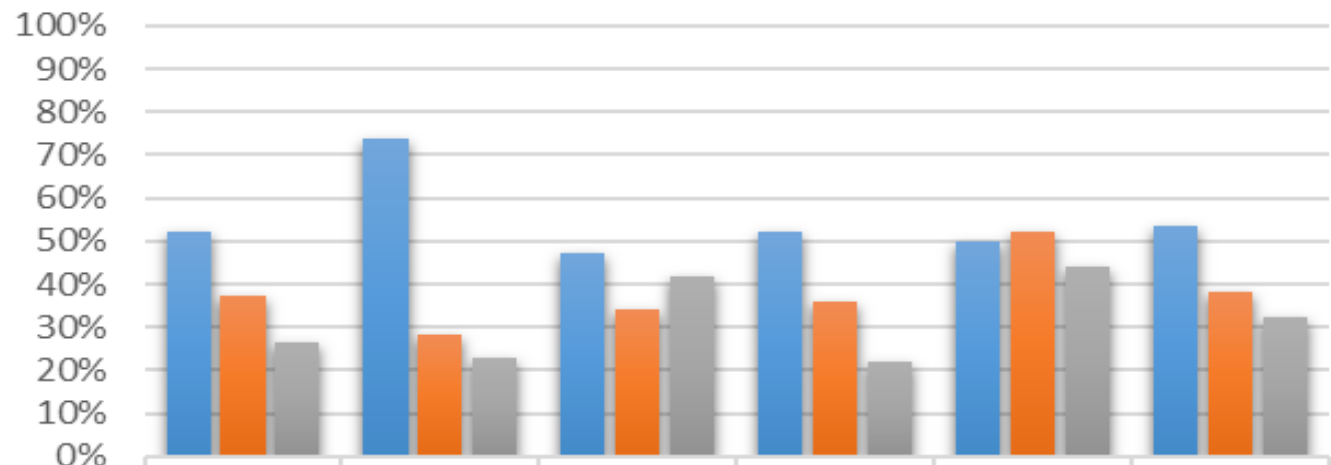
Placement Orders Made



*2019/20 full year projection calculated using average of data since 2014/15

Duration from Placement Order to Placement

Proportion of children placed for adoption within 6 months of their placement order

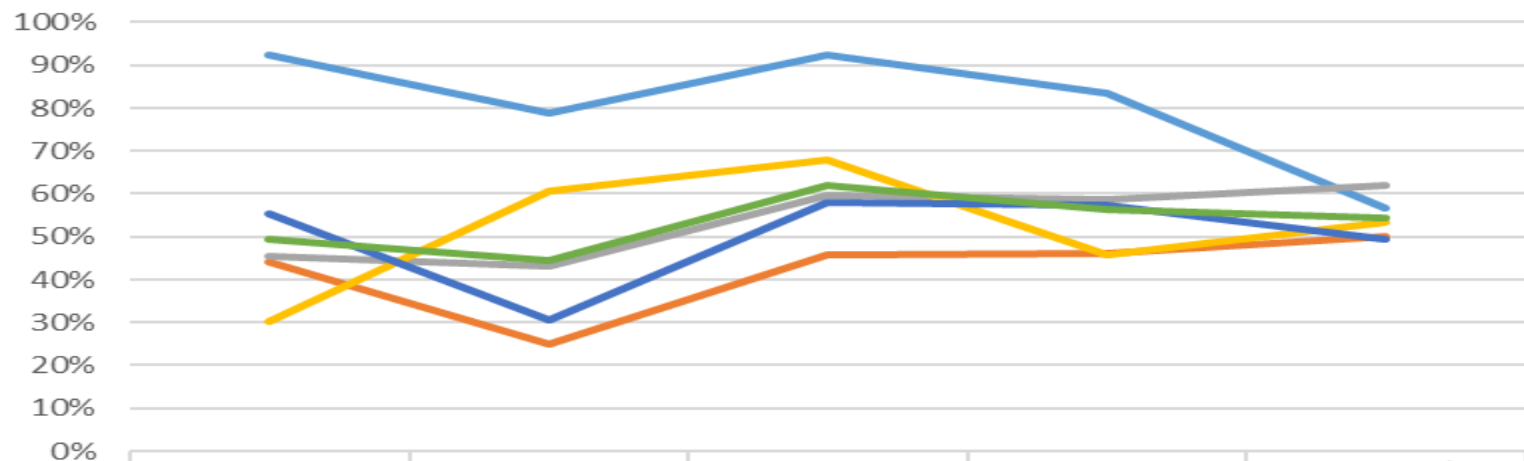


	MW	NW	SE	VVC	WB	Total
■ 2017/18 Q3&Q4	52%	74%	47%	52%	50%	53%
■ 2018/19	37%	28%	34%	36%	52%	38%
■ 2019/20 Q1&Q2	27%	23%	42%	22%	44%	32%

Life Journey Materials available at 2nd review



Proportion of children who had their life journey materials at 2nd adoption review



	2015-16	2016-17	2017-18	2018-19	2019-20*
MW	92%	79%	92%	83%	57%
NW	44%	25%	46%	46%	50%
SE	45%	43%	60%	59%	62%
VVC	30%	61%	68%	46%	53%
WB	55%	30%	58%	57%	49%
Total	49%	45%	62%	56%	54%

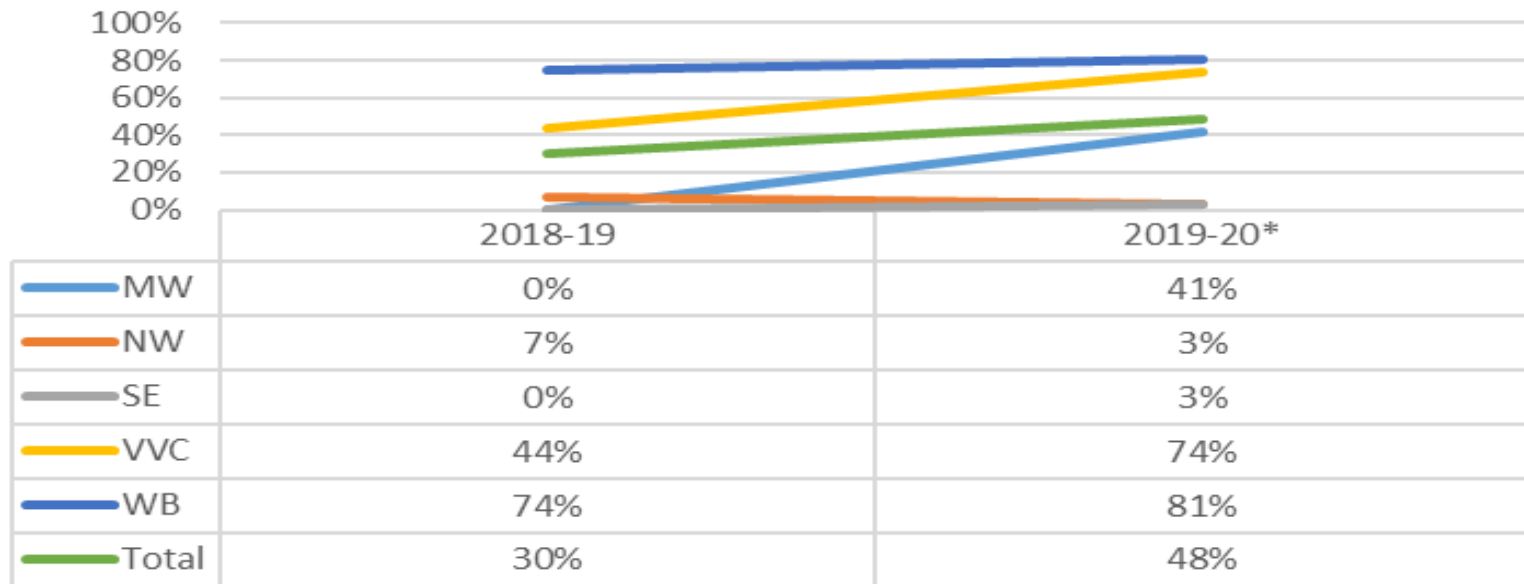
*2019/20 full year projection calculated using average of data since 2015/16

Achieving more together / Cyflawni mwy gyda'n gilydd

Life Journey Materials available at matching



Proportion of children who had their life journey materials at matching panel



*2019/20 full year projection calculated using average of data since 2018/19



Achieving more together / Cyflawni mwy gyda'n gilydd